



George V Avenue, Worthing

Per Calendar Month
£825 Per

- Ground Floor Flat
- Open Plan Living
- EPC Rating C
- One Bedroom
- Close to Local Shops
- VIEWINGS MAY 16TH
11:00 - 12:00
- OPEN DAY NOW FULLY
BOOKED

Robert Luff & Co are delighted to offer to let this compact one bedroom ground floor flat located in George V Avenue.

With open plan living combine kitchen / living room, bedroom, bathroom and close to local shops this property is available JUNE 2026.

VIEWINGS SATURDAY MAY 16TH 11:00 - 12:00 - OPEN DAY NOW FULLY BOOKED

T: 01903 331247 E: info@robertluff.co.uk
www.robertluff.co.uk

**Robert
Luff & Co**
Sales | Lettings | Commercial



Accommodation

Communal Entrance

Access to through the communal courtyard and stairs leading to the 2nd floor.

Entrance Hall

Entryphone system. Laminate flooring. Doors leading to:

Living Room & Kitchen - 'L' shaped 17'0" max x 11'0" (5.18 max x 3.35)

Double glazed side aspect windows. Laminate flooring. Double radiators.

Matching wall and base units incorporating the stainless steel sink with drainer and mixer tap. Built in electric oven with a four ring gas hob, extractor hood and stainless steel splash back. Integral washing machine and fridge with freezer compartment. Radiator.

Bedroom One 11'5" x 7'5" (3.48 x 2.26 (3.49 x 2.25))

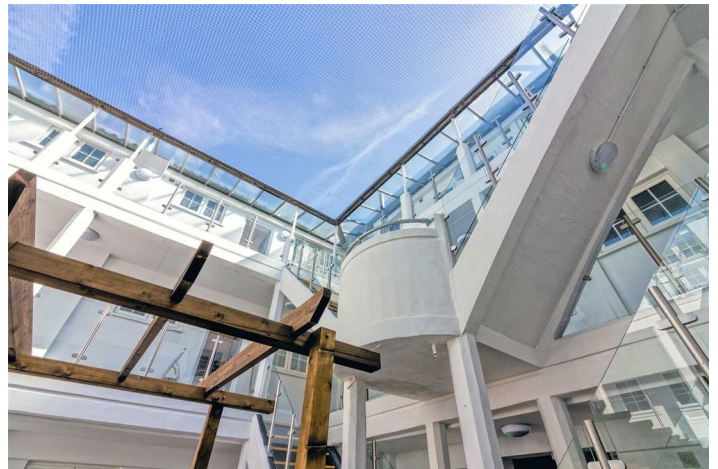
Double glazed side aspect window. Radiator.

Bathroom

Double glazed side aspect window. Paneled bath with shower attachment and glass shower screen. Low level WC. Wash hand basin with storage under. Chrome towel radiator.

Outside

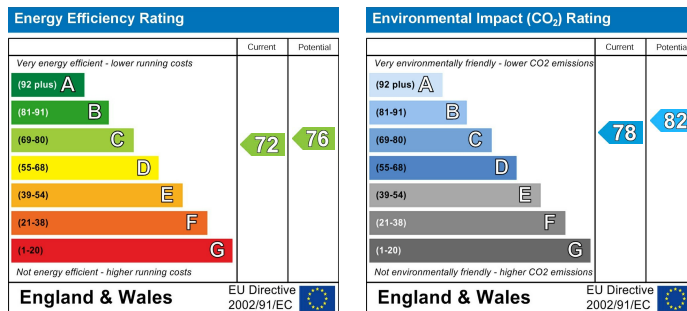
Communal internal courtyard with raised flowerbeds. Surrounding communal gardens and communal bin area.



30 Guildbourne Centre, Worthing, West Sussex, BN11 1LZ

T: 01903 331247 E: info@robertluff.co.uk

www.robertluff.co.uk



The information provided about this property does not constitute or form any part of an offer or contract, nor may it be regarded as representations. All interested parties must verify accuracy and your solicitor must verify tenure/lease information, fixtures and fittings and, where the property has been extended/converted, planning/building regulation consents. All dimensions are approximate and quoted for guidance only as are floor plans which are not to scale and their accuracy cannot be confirmed. References to appliances and/or services does not imply that they are necessarily in working order or fit for the purpose.